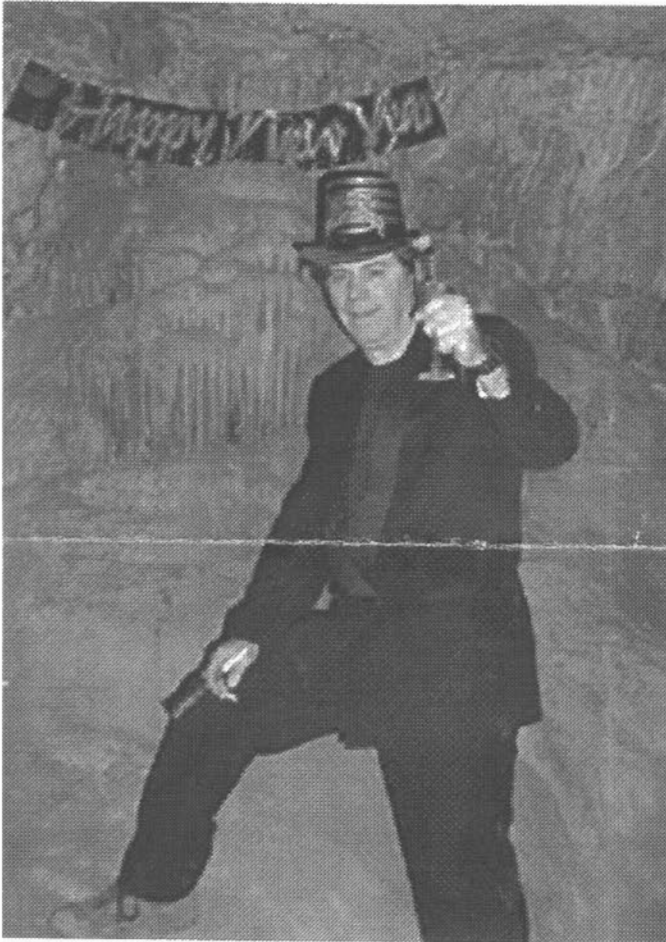


THE MAVERICK BULL

The Monthly Newsletter Of The
FORT WORTH MAVERICK GROTTO
OF THE NATIONAL SPELEOLOGICAL SOCIETY

Volume 14, Issue 2

February 2001



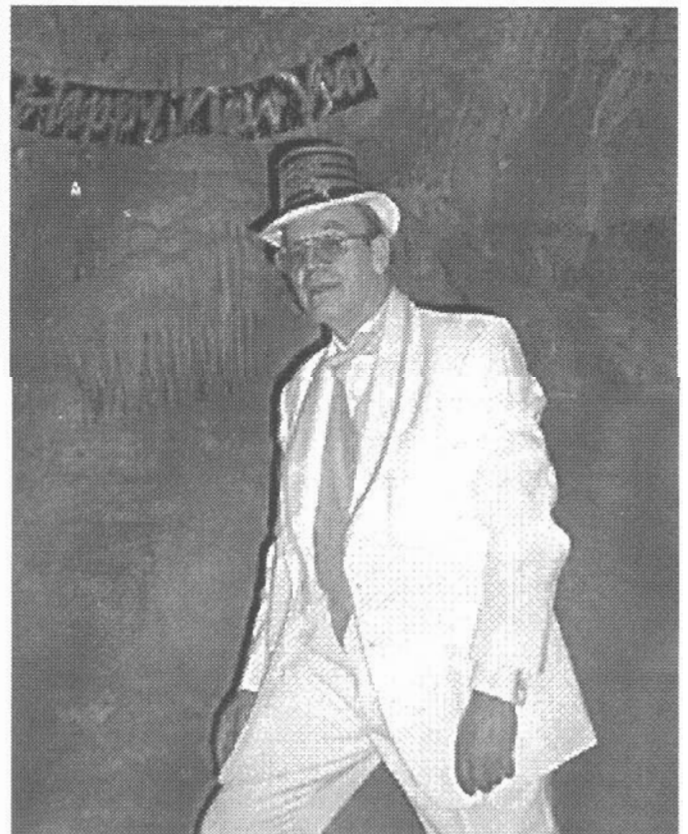
Welcome to the New Millenium!

Phil Sanders (left) toasts ya'll in his standard black caving Tux, while Dave Gers (below) in the white Tux shows that caving isn't always that muddy at the McKittrick Hill Caving Apparel Fashion Show and New Years Party.

Ya'll should'a been there!

(We went caving too!)

McKittrick Hill trip Jan. 1 at midnight
photos by Dave Gers.



THE MAVERICK BULL

Copyright 2000 Maverick Grotto.

The Maverick Bull is the monthly newsletter of the Maverick Grotto, an internal organization of the National Speleological Society (N55 G-322). The editor invites all individuals and other grottos to submit articles, news, maps, cartoons, art, photographs, and other two- and three-dimensional goodies. If the material is to be returned, a self-addressed stamped envelope should accompany it.

Reprinting Articles: Internal organizations of the National Speleological Society may reprint any item (unless copyrights belong to the author as stated in the byline) first appearing in the *Maverick Bull* if proper credit is given and a complete copy of the publication is delivered to the editor at the time of publication. Other organizations should contact the editor of the *Maverick Bull* at the address herein.

Exchanges: The *Maverick Grotto* will exchange news letters with other grottos. Contact the editor.

Complementary Newsletters: The *Maverick Grotto* will provide complementary newsletters to persons or organizations that provide cave access (i.e. Iandowners) or otherwise provide assistance to

cavers. The *Maverick Grotto* will provide one free issue to persons interested in becoming members.

Subscription Rates: Subscription rates are \$15 per year for nonmembers and free for members.

Membership Policy: Any individual with interests, beliefs, and actions consistent with the purposes of the *Maverick Grotto* and the National Speleological Society is eligible for membership. Acceptance of new members is based on payment of dues and a mandatory three-trip requirement with at least three different grotto members. These three members shall act as sponsors. At least one sponsor must attend the meeting at which the membership vote is taken. A two-thirds majority vote of the members present will be required for acceptance.

Meetings: Meetings are held the second Tuesday of each month at Smokey's Ribs, 5300 E. Lancaster, Fort Worth. It is located less than one mile west of Loop 820. The time is 7 p.m., and the food is good.

Carbide: Grotto carbide is available at the meeting if prior arrangements are made. Carbide is free for the asking. Contact Russell Hill at (817) 220-7108

or Butch Fralia at (817) 346-2039 for more information.

Library: Support your grotto library. Russell Hill is accepting books, magazines, and videos related to caves and caving for our library. Thanks to Russell for his efforts in transporting the library collection to meetings.

Chairman

Chad Fenner 3700 Wayland
Fort Worth, TX 76133
(817) 292-7722

Vice-Chairman

Ed Goff
737 Bizerte Ave.
Dallas, TX 75224
(214) 942-6024
egoff@rice.edu

Secretary/Editor

Karen Perry
2212 6th Ave.
Fort Worth, TX 76110
(817) 922-0889
rod@swbell.net

Treasurer

R. D. Milhollin
5101 Springlake Parkway #714
Haltom City, TX 76117
(817) 485-0733
rdmilh@tenet.edu

Cave Rescue Call collect (512)
686-0234

PHOTOS & ARTWORK

Front cover: Photos by Dave Gers and Phil Sanders

CARTOONS BY CHARLIE LOVING

OTHER CREDITS

MAILING LIST: Sharon Mastbrook
Butch Fralia : Constitution & Bylaws
Release Form

Rod Perry for layout help
And others who helped or contributed

THANKS

VISIT OUR WEB SITE

The *Maverick Grotto* web site is now at: maverickgrotto.batcave.net
Check it out!

February Meeting

The next meeting will be Tuesday, February 13, at Smokey's Ribs, 5300 Lancaster, at 7p.m. Program unknown.



EDITOR'S RAMBLING

This is one of those articles I hate to write and we all hate to read!

The future of the MAVERICK BULL NEWSLETTER is in YOUR hands! Cost of printing, paper and postage are hurting the bank account. Not just the grotto's, but the wallet of those who have produced it in the past. I know we all enjoy getting it and don't wish to see this quality, award winning publication fold! So, please be at this month's meeting!!! We are going to be talking about ways of saving the BULL. Your input and vote will be needed. Some ideas that have been past around include :

1. Putting it on the web page with a special pass word. Or create it as a PDF(Portable Document Format).
2. Not mailing the newsletter out until after the meeting. Hand it out to those present at the monthly meeting and mail the rest. (This however doesn't help with printing cost.)
3. The grotto buys a copier or printer designated for grotto use only for the current editor. As editors change, the copier/printer would be past on.
4. Sell advertizing to places like BACKWOODS, REI, MOUNTAIN SPORTS.

Now for the usual plea; Articles, pictures, maps, cartoons, as always are needed. Get involved! After all, this is YOUR newsletter!

So much karst, so little time.....

Karen



CALL FOR VOLUNTEERS

On March 9, 2001 the long awaited IMAX film AMAZING CAVES will open to the public at the Fort Worth Museum of Science and History. The grotto has been asked by the NSS and the Museum to help launch this film about the discovery and exploration of caves. Don't get left out of this history making event. Attend the January and February meetings for more information. Get involved! Volunteer now! Possibilities include rope climbing and rappeling demonstrations, cave gear display with information table.

How I Spent My New Year's Vacation by Dave Gers

On the crisp, cool Texas winter morning of December 29, 2000, I arrived at Karen Perry's house just before seven O'clock, as I had promised. I quickly discovered that everyone else had promised 6 O'clock. Phil Sanders, Steve Mulkahy and R.D. Milhollin were all busily engaged in the "milling around" ritual that generates caves (see Speleo Digest 1996, page 486 under the heading "Paraspeleology"). This was my first chance to see R.D.'s new pickup truck that I can only describe as big and green with a pull tab cover over its bed. A Mexican Speleological Society bumper sticker gives it great character.

Since Karen and I share similar odd musical tastes, such as: Enigma and Vas, her CD collection helped us pass the eight hour drive from Ft. Worth to Carlsbad. 60s rock Phil was outvoted. After arriving at Carlsbad, we then made the obligatory stop at Guadeloupe Mountain Outfitter's to pick up a few pieces of gear and checked into a nearby motel to regroup.

Our first cave visit, still Friday evening, was to Park's Ranch Cave. I'm told that the cave has several entrances so we chose one within a sink that's about 15 feet deep. The sink is surrounded by a tall, chain-link fence, which, I suppose, keeps complete idiots from driving or riding into it. The part of the cave we saw is a tubular walking passage about two meters in diameter with a small, ankle deep stream flowing through it. Large cats and other water-woosies can easily bridge the stream. We followed the stream to where it sumped and then we returned. We noted one dying bat on the stream bank, which we left alone, and a whiskey bottle and several cigarette butts, which we extracted from the cave.

Saturday morning, Chris Hall and Jiyong Cha joined us and we all went off to Wind Cave. This cave has a long, not very difficult climb down from its entrance to a point where it drops about 12 feet to the first floor of this multi-level maze cave. Rope and climbing gear are required to negotiate this short drop, however, rotting rock and poor placement of solid rigging points make descent and ascent difficult. We have yet to hit on the right combination of rigging and gear that will make this drop easier.

We penetrated the cave several levels down to a large breakdown room that had several exits. From there, groups of us in turn explored the possible leads. One group discovered the way to the highly decorated Blood River area, from where the cave continues, while others of us did the photography thing in the breakdown room. Since we had already spent about ten hours wandering about, we agreed to save Blood River and beyond for another time. We returned to Carlsbad for showers, dinner and an evening of bad movies on TV.

Sunday was December 31st, the eve of the new year/decade/century/millennium. With the gracious permission of Jim Goodbar, from the Bureau of Land Management (BLM), we planned to ring in the New Year within McKittrick Cave. We were to repay the BLM hospitality by performing some cleanup and flagging tape replacement chores in McKittrick and Sand caves. First we went to McKittrick Cave to drop off our party fixin's and to begin the chores. We discovered that the lock on one of the entrances was ajar. After much agonizing, our trip leader Karen made the command decision to abort our entry into the cave until she could get further instructions from the BLM.Cave Resource Management.

As we retreated, R.D, Jiyong and Chris visited Sand Cave and took a few photos of the formations at the bottom of the first pit just inside the cave's lower entrance. We then returned to Carlsbad from where Karen phoned Jim Goodbar to explain the problem at McKittrick Cave.

THE MAVERICK BULL

How I Spent My New Year's Vacation by Dave Gers CONTINUED

Jim said that he knew the last visitors to the cave. He believed the open lock was a simple oversight, Karen had made the correct decision to abort and that we should go ahead with our party plans. Karen, Phil, Chris and I jumped into Karen's truck and returned to McKittrick Hill. The other cavers remained behind in the comfort of the motel room for various reasons (ill and tired).

We reached a large room in the cave where Karen brought out party favors and decorations to festoon (I like that word) a nearby flowstone formation, Phil brought out his camera gear, I brought out the sparkling grape juice and plastic travel glasses while Chris wondered what the hell he was going to do to make the party even more memorable. You see, when Jiyoung heard that the party was formal, she didn't believe it, so Chris wasn't prepared for the festivities. While Karen changed into her gown, Phil and I changed into tuxedos. Chris became inspired and donned the "Baby New Year" persona.

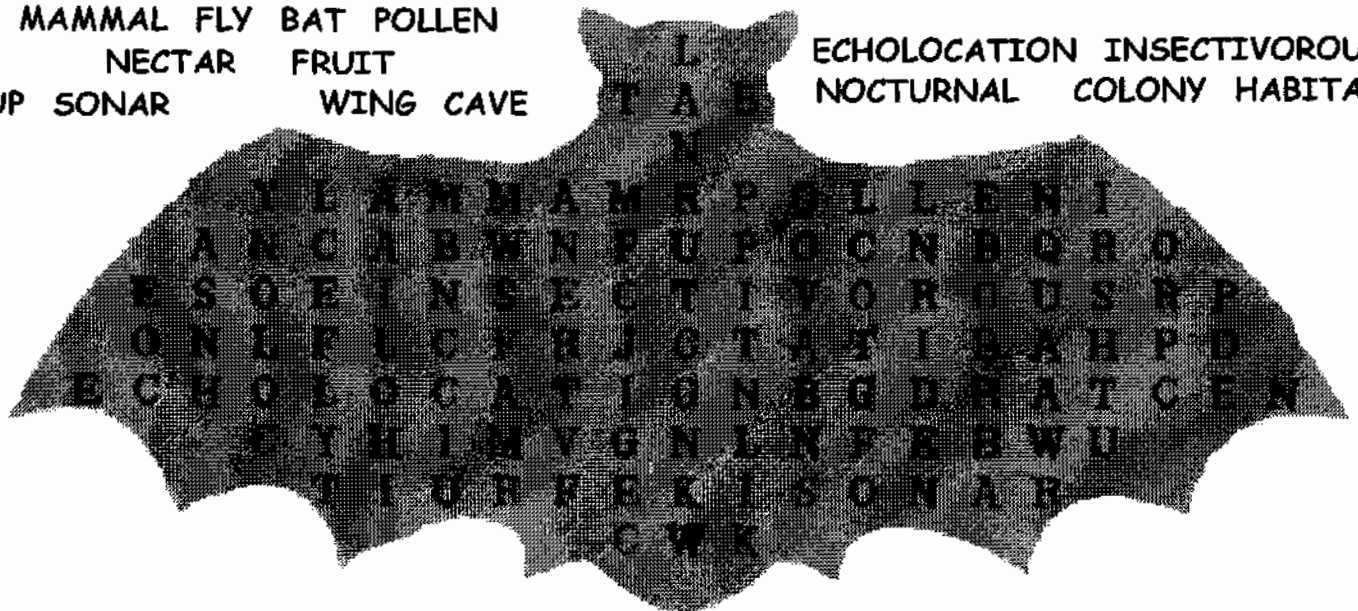
Soon, amid much horn blowing and other such fanfare, we toasted in the New Millennium. I presented each caver with the finely etched (magic marker), commemorative glass they used for the toast. Each glass reads, "McKittrick Cave 12/31/00 - 1/1/01." Finally, we hung around for photos: individual, group (with and without bunny ears).

Monday morning, R.D. and Steve made a quick getaway. The five remaining cavers picked up some paper plates and colored markers at the local Wal-Mart and brought them to a little restaurant. We ordered brunch and spread the plates and markers out on the table. Each was assigned two plates on which to draw and decorate a letter of the alphabet. After breakfast, we drove to the BLM office for a final group photo. We held up our plates and arranged ourselves so that we created a sign to give to Jim Goodbar. The sign reads, "THANKS JIM."

(Editor's note: Photos not yet available)

FIND THE WORDS

MAMMAL FLY BAT POLLEN
NECTAR FRUIT
PUP SONAR WING CAVE TABE
ECHOLOCATION INSECTIVOROUS
NOCTURNAL COLONY HABITAT



THE MAVERICK BULL

CONSTITUTION OF THE MAVERICK GROTTO OF THE NATIONAL SPELEOLOGICAL SOCIETY

- I. The name of this organization shall be the MAVERICK GROTTO of the National Speleological Society.
 - II. The purpose of the MAVERICK GROTTO shall be a non-profit organization to further the discovery, exploration, survey, scientific study, conservation, and human relations of spelcology, especially in New Mexico, Oklahoma, and Texas. Additionally, safety, techniques, and land/owner relations will be promoted.
 - III. Any caver who's interest, beliefs, and actions are consistent with the purposes of the MAVERICK GROTTO and the National Speleological Society is eligible for membership. Membership in the National Speleological Society is encouraged, but not required except to hold office. Acceptance of new regular, family, or associate members shall be by payment of dues and by two-thirds vote of the grotto membership present at a regular monthly meeting, after a three trip requirement with at least three different grotto members has been met. These three members shall act as sponsors and one must be present at the time of voting.
 - IV. Honorary membership can be bestowed upon individuals as an honor by a three-fourths majority vote by grotto members present at a regular monthly meeting.
 - V. Associate members may not vote or hold elected or appointed office. Otherwise the requirements and privileges are identical to the regular membership. Family members shall be those members residing with a regular member.
 - VI. Revocation of membership for valid reasons may occur by a two-thirds vote of members present at a regular monthly meeting, provided such member is advised in writing by the secretary at least twenty days in advance of the meeting that such action has been included upon the agenda, with the reason for the proposed removal. Membership will automatically lapse in cases where the member has not attended any regular monthly meetings during a calendar year, or where dues are more than four months delinquent.
- VII. MAVERICK GROTTO Officers
- A. The officers of the grotto shall be a Chairperson, Vice Chairperson, Secretary, and Treasurer. They shall be elected in that order at the regular monthly meeting in November, and take office on 1 January of the next year. The chair and vice chair shall serve a maximum of three consecutive years in either or both positions.
 - B. The executive Committee shall consist of all elected officers of the MAVERICK GROTTO.
 - C. The Chairperson will delegate authority and appoint committee chairpersons.
 - D. The Vice Chairperson will also be a program manager, in addition to presiding at events in the absence of the Chairperson.
 - E. The Editor/Secretary shall record minutes of the events, maintain all non-financial records, and publish a monthly newsletter.
 - F. The Treasurer shall keep accurate dues/subscription/expense records and maintain an up to date member/subscriber list. This list shall be mailed to all members each March.
 - G. All elected officers must be current members of the National Speleological Society.
 - H. Elected or appointed officers may be removed by two-thirds vote of members present at any regular monthly meeting.
- VIII. OFFICIAL MEETINGS.
- A. Regular grotto meetings shall be held monthly at a consistent date advertised in the grotto newsletter. The December meeting may occur as a grotto Christmas Party. The regular meetings will occur in the Tarrant County, Texas area, except where an outlying member(s) wish to sponsor a meeting. Such outlying meetings will be subject to the majority vote of the Executive Committee and shall be advertised in the previous grotto newsletter.

THE MAVERICK BULL

B. Special Meetings shall be called upon the written request of ten or more grotto members. Notice shall be mailed to the current address of all members seven days prior to such meeting. Such notice shall contain the agenda for such meeting and only items on the advertised agenda may be considered at such meeting.

IX. Amendments may be approved to the Constitution and/or bylaws by a vote of two-thirds of a quorum of members present at an official meeting, provided the proposed amendment is presented in writing and read to the membership in a previous meeting, and has been published in full in the previous newsletter.

BYLAWS:

1. A Quorum for a meeting shall include one elected officer; and five voting members or one fourth of the regular membership, whichever is the larger number.
2. For any and all voting situations, a quorum must be present.
3. All members including Honorary Members, family members age 14 and over have one vote. Unless otherwise specified in the Constitution or Bylaws, any motion approved by a majority of a quorum shall be passed.
4. Associate members shall include family members under the age of 14.
5. Officers of another grotto or grotto level speleological group may not hold office in the MAVERICK GROTTTO.
6. Dues shall be \$6.00 per year, payable before the last day of February for a calendar year to the grotto treasurer. Only new member dues may be prorated for the balance of the year. Family members do not pay dues unless they receive a separate newsletter.
7. Subscribers to the grotto newsletter shall pay a minimum of 10.00 yearly. Subscription to the newsletter will be credited to that year's membership fee, should that subscriber be voted in as a member. Subscription shall not imply or constitute membership in any form.
8. The Executive Committee shall offer recommendations and place items of business on an agenda, but may not take final actions not specifically provided in the Constitution or Bylaws; or delegated by the voting membership. Other committees with similar rights and limitations may be appointed by the Chairperson.
9. The Grotto newsletter will be a membership communication instrument with monthly circulation designed to also provide timely meeting notice. It will maintain a neutral, non-political atmosphere and publish in the following priorities; meeting notice and agenda, calendar of events with emphasis on the next sixty days, meeting minutes, important legal/ environmental/ conservation items of area interest, trip reports, general items of interest, and "fillers."
10. In the event of dissolution, any property of the grotto shall be sold at auction, with monies going to the National Speleological Society. Any property of the National Speleological Society shall be returned at that time.

**(EDITOR'S NOTE: I THINK WE NEED TO CHANGE THE DUES .
IT'S A LITTLE OUT OF DATE. HOWEVER, I THINK A VOTE
IS REQUIRED.)**

**JUST THINK! YOUR PICTURE COULD BE HERE!!
NO NOMINATIONS FOR COVER OF THE MONTH
WHERE RECEIVED.**

**WELCOME NEW MEMBERS:
ANNE MURPHREE AND WILL HARRIS**

**THE MAVERICK GROTTO
RELEASE AND WAIVER**

WHEREAS, THE UNDERSIGNED IS A SPELUNKER, HAVING AN INTEREST IN THE EXPLO_ RATION AND STUDY OF CAVES, DESIRES TO ENTER AND EXPLORE A CAVE OR CAVES ON THE LAND OWNED, LEASED, OCCUPIED OR UNDER THE CONTROL OF:

_____ located at or near: _____

And WHEREAS, THE LANDOWNER IS RELUCTANT TO GIVE PERMISSION FOR THE EXPLO_ RATION ON HIS LAND BECAUSE OF THE DANGERS INVOLVED, AND THE POSSIBILITY OF INJURY TO THE SPELUNKER.

Now, THEREFORE, IN CONSIDERATION OF THE PREMISES, THE UNDERSIGNED SPELUNK_ ERS RECOGNIZE THAT UNDER TEXAS STATE LAW, CHAPTER 75 OF THE CIVIL PRACTICE AND REMEDIES CODE, (ACTS 1989, 71ST LEGISLATIVE SESSION, EFFECTIVE 1 SEPTEMBER 1989) THE LANDOWNER DOES NOT:

- (1) Assure that the premises are safe for cave exploration.
- (2) "owe to the person to whom permission is granted a greater degree of care than is owed to a trespasser on the premises or;
- (3) Assume responsibility or incur liability for any injury to any individual or property caused by any act of the person to whom permission is granted" and
- (4) "charge for entry on the premises."

Date: _____

PRINTED OR TYPED NAME _____

SIGNATURE _____

UPCOMING TRIPS AND EDUCATIONAL WORKSHOPS

FEBRUARY 10TH, TSA WINTER WORKSHOPS 2001 COLORADA BEND STATE PARK

Cost is \$10.00 per person and you MUST register before February 4th with Terry Holsinger, trhli@sprynet.com. All Workshops will include field work, not just classroom! Time will allow for only ONE (1) workshop per person due to time. Choices are:

- DRAFTING CAVE MAPS**
- IMPROVING YOUR SKETCHING**
- CAVE PHOTOGRAPHY WITH ON CAMERA FLASH (POINT & SHOOT)**
- BASIC OFF CAMERA CAVE PHOTOGRAPHY**

PROJECTS AROUND TEXAS 2001

COLORADO BEND STATE PARK

February 10, March 10
April 14, May 12
Terry Holsinger , trhli@sprynet.com

POWELL'S CAVE

February 24
Terry Holsinger , trhli@sprynet.com

GOVERNMENT CANYON KARST

February 17 &18
Marvin & Lisa Miller, mlmiller@gvtc.com

HAYS COUNTY PROJECT

Michael Moore, mrmike@centurytel.net

HARD BARGAIN CAVE DIG

Keith Heuss, kheuss@lcra.org

OUT OF STATE PROJECTS

HIGH GUADALUPES RESTORATION

Lincoln Natural Forest, New Mexico
CONTACT: Susan Herpin

ENDLESS CAVE SURVEY

Eddy County, New Mexico
Contact Noble Stidham, eagle@door.net

SAND & McKITTRICK CAVES

CLEAN UP & RESTORATION
Contact Karen Perry, rodp@swbell.net

MAMMOTH CAVERNS RESTORATION

Norm Rogers, nrogers@iaonline.com

UPCOMING MAVERICK GROTTO TRIPS

March 2, 3, 4

ALABASTER STATE PARK
Freedom, Oklahoma
4 Wild Caves, Camp in 5th Cave
1 Tour Cave
Good Family Trip, Small permit fee
Contact Karen Perry

April 12, 13, 14, 15, 16

**HIDDEN, BLACK, COTTONWOOD,
PINK PANTHER, PINK DRAGON,
THREE FINGERS**
Lincoln National Forest, New Mexico
Contact Karen Perry

May 4, 5, 6

FITTON CAVE
Harrison, Arkansas
Contact Karen Perry
Spaces Limited / 2 Teams
Photography to be led by John Langevin
Recreational Exploration to be led Mike Pearson

Start Planning now for the NSS CONVENTION, July 23 through 27 in Mt. Vernon, Ky.
Leading a trip? Get it listed on the TRIP CALENDER. Let's keep MAVERICK active!

**THIS MONTH IN
THE MAVERICK BULL**

**Editor's Rambling
Call For Volunteers
New Year's Trip Report
Maverick Grotto Constitution
Maverick Grotto Bylaws
Maverick Grotto Release Form
Trip Calander**

**AND NO PICTURES!!!!!!
GET THAT FILM DEVELOPED AND
PICTURES TO THE BULL**

