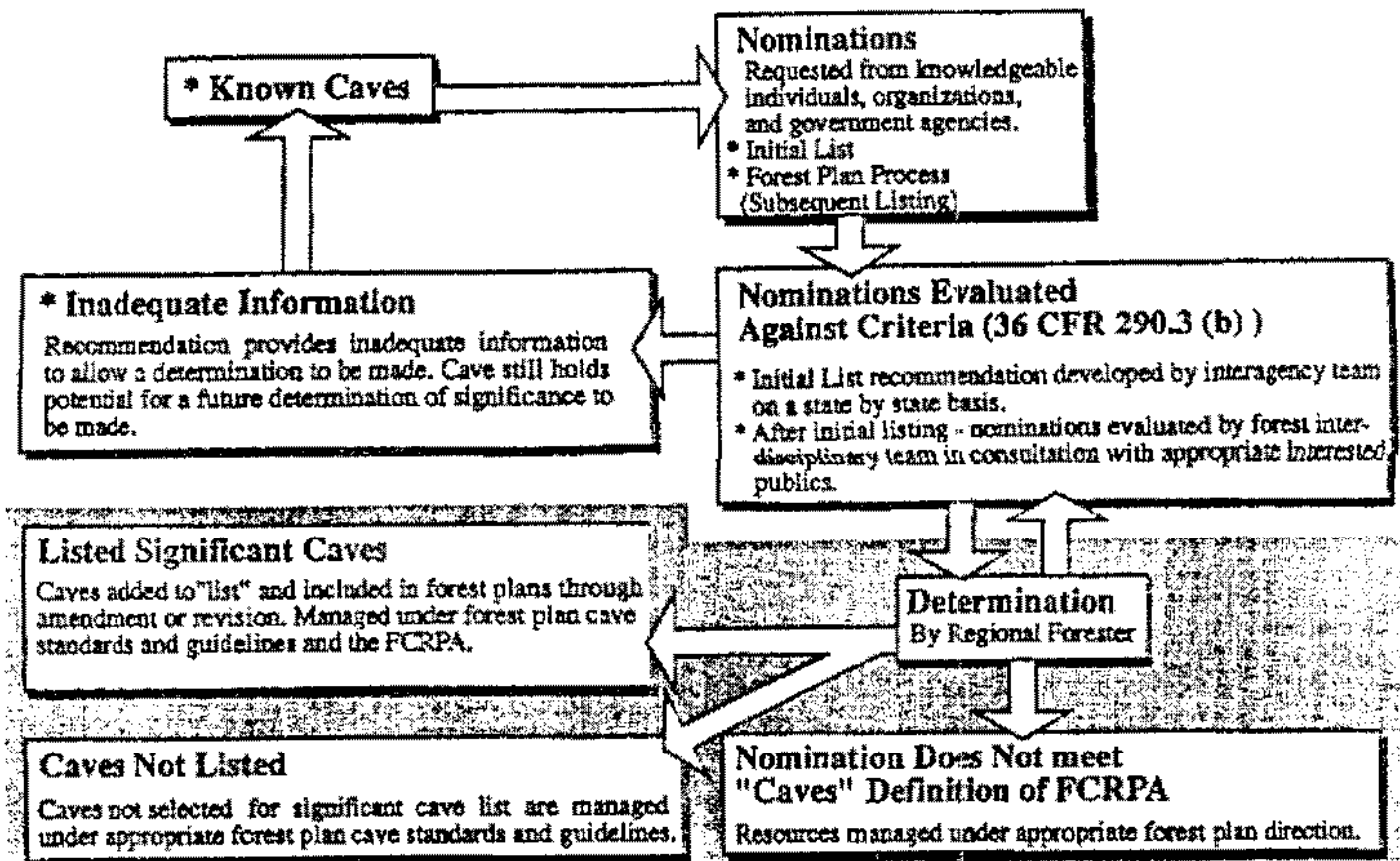


## Proposed Procedure for Initial and Subsequent Listing of Significant Caves Found on National Forests



\* Caves managed under existing regulation at 36 CFR 261 & 290.4 to protect them during the period of consideration.



## CALENDAR OF EVENTS

MARCH 7-8, Monthly expedition to Mystic Cave area. Contact Woodrow Thomas 903-395-4431 or Greg Mooty.

MARCH 10, MAVERICK GROTTO MEETING, last chance to pay dues and retain 1992 membership or subscription.

MARCH 13-14, COLORADO BEND STATE PARK. Contact: Butch Fraha.

MARCH 14-21, (Spring Break) CAVE HUNTING NEAR BIG BEND - Big Brushy Canyon Preserve. The Texas Nature Conservancy has recently acquired nearly 10,000 acres of land along the eastern boundary of Big Bend National Park. Big Brushy Canyon Preserve is beautiful, rugged, remote and has not been explored for caves. The purpose of this trip is to look for caves in the massive limestone. Relief is up to 300 meters, which is potential for the deepest caves in Texas. Gasoline expenses will be fully or partially reimbursed depending on the total number of vehicles and whether you stay all week. Contact George Veni, (512)-558-4403, for information or to reserve yourself a spot.

MARCH 27-29, HILL COUNTRY STATE NATURAL AREA, Special project to complete work in twenty-one caves that has spanned over several years. The last time, the park staff barbecued a pig (no pig guaranteed for this trip). Contact: Butch Fraha, (817)346-2039.

APRIL 4-5, Monthly expedition to Mystic Cave area. Contact Woodrow Thomas 903-395-4431 or Greg Mooty.

APRIL 10-13, COLORADO BEND STATE PARK, monthly work trip. This should be a back to normal weekend of finding and exploring new caves. Contact Butch Fraha.

APRIL 14, MAVERICK GROTTO MEETING.

APRIL 24-26, COLORADO BEND STATE PARK, Earth day celebrations, this will likely involve cave cleanup or a big public presentation of cave material. Contact Butch Fraha.

MAY 1-3, TSA SPRING MEETING. Preliminary planning for the spring meeting is underway.

MAY 8-10, COLORADO BEND STATE PARK, monthly work trip.

MAY 12, MAVERICK GROTTO MEETING.

JUNE 9, MAVERICK GROTTO MEETING.

JUNE 12-14, COLORADO BEND STATE PARK, monthly work trip. This will be the last work trip until October.

JUNE 21-27, CARLSBAD CAVERNS RESTORATIONS. Contact Dick Venters, 410 Stallion Road, Rio Rancho, NM 87124. (505)-892-7370.

JULY 14, MAVERICK GROTTO MEETING.

AUGUST 3-7, NSS CONVENTION, Salem, Indiana, Delaney Creek Park. Contact: Scott Fee C/O 1992 Convention, P.O. Box 2262, Clarksville, IN, 46206. (317)291-7807. All fees are fully refundable.

AUGUST 11, MAVERICK GROTTO MEETING.

SEPTEMBER 8, MAVERICK GROTTO MEETING.

OCTOBER 9-11, COLORADO BEND STATE PARK, monthly work resumes.

OCTOBER 13, MAVERICK GROTTO MEETING.

NOVEMBER 10, MAVERICK GROTTO MEETING, annual election of officers.

NOVEMBER 13-15, COLORADO BEND STATE PARK, monthly work trip.

DECEMBER 11-13, COLORADO BEND STATE PARK, monthly work trip.

DECEMBER, MAVERICK GROTTO MEETING will not be held in favor of Christmas Party.

TCMA: To our knowledge, Donna Anderson is still selling wind chimes for the Texas Cave Management Association. If you're interested, attend the meeting with money or call Donna at (817)-246-6313.

COVER: There will mostly likely be a cover this month. Since the cover is the first page, if you get a newsletter and it has a front page, we located a cover.

## FEBRUARY MEETING

Visitors Terry Anderson, Wendell Berg, and Bruce Freeby from the Decatur area attended. They are considering starting another North Texas Grotto. They attend Maverick Meetings when time permits because it's actually closer to the Maverick Meeting than Wichita Falls.

Dale Ellison was publicly recognized for the excellent newsletter for the month of March. Ed Young led the grotto in a round of applause for Dale.

Rafal Kedzierski gave a report on a cave explored at Colorado Bend State Park. It may be a better cave than Polish Pit.

Sharon Darnell, Maverick Grotto contact for the '94 NSS Convention committee, read a letter from the committee, asking that \$50.00 be donated from the Grotto. The motion was approved and the Maverick Grotto donated \$50.00 in support of the Convention Effort. These funds will be used to transport Ron Ralph or Mike Walsh to the NSS Board of Governors Meeting in April

to make the presentation.

A fifty dollar donation to Russell Hill and Cynthia Van Hooser, son's memorial fund was approved. Sympathy was expressed by members present.

Amendments to the Maverick Grotto Constitution occurred at the February meeting. It was decided that bylaw number 6 will be modified to read dues \$10.00 vs. \$6.00. Bruce Anderson made the point that it should be difficult to change the dues structure. It's unlikely that dues would have to be increased on short notice. The proposed change occurs later in this issue.

Andy Lauer presented an excellent 3-D slide presentation. Three-D slides are old technology comprised of two thirty-five millimeter slides slightly offset from each other providing an image with depth. We hope Andy will be able to make a return engagement another time. Andy by the way is qualified for membership in the grotto should he decide to apply.

## MARCH MEETING

The March Meeting will see approval of the amendment to The Maverick Grotto bylaw number 6, brought to a vote. There will be

a cave video presented by Ed Young. Come on by, it could get exciting or we might have a surprise (no promises).

## MEETING POLICY

By Butch Fralia

Since becoming Chairman of the Grotto, I've tried to keep meetings as short and to the point as possible. I realize (this applies to me as well) that more people attend meetings to visit friends than for the meeting itself. For people who are seldom able to cave, it's their only contact with caving. For others who cave frequently, it's their opportunity to find out what happened on the trips they didn't go on. I intend to maintain this policy and keep meetings as short as possible while assuring that all the bases are covered.

I've received assistance and positive comments on this policy. I appreciate the comments and any feedback I can get

concerning making the Grotto a better organization. If there are significant issues that need discussing, they should and will be discussed. Once the issues are discussed, there's no reason to continue beating a dead horse.

As a personal policy statement, I'm pro grotto and pro caving. Whatever I can do to make a better grotto and to enhance caving for everyone, I will do. I can't do it without you, the membership of the Grotto. Your desires, interest, and participation, are areas of prime concern. It's not "my" grotto, it's "our" grotto. I may be chairman this term but it takes all of us to make a grotto run. Help!!

PROPOSED BYLAW CHANGE  
MAVERICK GROTTO CONSTITUTION

As discussed and agreed upon in the February meeting, the grotto will vote to update bylaw number six of the Constitution during the March meeting. To update or change the constitution, the change must be

read to the grotto at the previous meeting. It must be published in the newsletter prior to the meeting of the vote. With this notice, these qualifications have now been met.

Change:

6. Dues shall be \$10.00 per year, payable before the last day of February to the grotto treasury. Only new member dues shall be prorated for the balance of the year. Family members do not pay dues unless they receive a separate newsletter.

EARTH DAY

The Maverick Grotto has been contacted by the Fort Worth Zoo with a request for a cave presentation program. They would like someone to set up some sort of table with

handouts, pictures or whatever. Anyone interested in this worthwhile activity should contact Lyndee at (817)871-7056.

## A TRISKAIDEKAPHOBIC MAY FEAR THE NUMBER 13, BUT WE HAVE REASON TO CELEBRATE.

How many pennies do you need to make a stack as tall or taller than a penny set on its edge? Most people will say nine or ten, but you must actually use 13 pennies...

Mathematically, 13 is a fascinating number. The first "teen" number, it is both a prime number (the sixth, after 2, 3, 5, 7 and 11) and a Fibonacci number, in which each number of the series is the sum of the previous two. (13 is the seventh, after 1, 1, 2, 3, 5, and 8.) The number 13 is also the first "emirp," a prime number that turns into a different prime number when reversed (31).

Elsewhere in mathematics, Euclid's Elements are contained in 13 books. There are 13 Archimedean polyhedrons. A cube has 13 axes of symmetry: Three go through opposite faces, four through diagonally opposite vertices, and six through opposite edges.

Other 13-related facts include 13 cards in a suit (hearts, diamonds, spades, and clubs) in every standard deck of playing cards. In music, an octave consists of 13 notes.

The number 13, some people believe, seems to have almost supernatural powers. And those who suffer from triskaidekaphobia, the fear of the number 13, won't reserve a seat in the thirteenth row of an airplane.

eat at a table seating 13 people, or rent a room on the thirteenth floor (although few, if any, hotels and office buildings officially have a thirteenth floor).

The superstition about 13 people at a dinner table supposedly harks back to the Last Supper, as told in the Gospel according to Saint John. Jesus Christ and his 12 apostles gathered for the last time before he was arrested and eventually executed. When Judas, the apostle who betrayed Christ, left, the thirteenth chair remained empty.

While the number 13 has been associated with Judas and the Last Supper, it also makes an unlucky appearance in other cultures. In Norse mythology, for example, 12 gods were invited to a dinner party. The god of mischief, Loki, crashed the party, and during the affair one of the guests was killed.

There's certainly no doubt that the number 13 had its dark side. There are traditionally 13 witches in a coven, thirteen steps on a gallows, and 13 coils of rope in a hangman's noose. And the thirteenth card of the tarot deck represents death, reminiscent of the Black Death, the plague that swept across Europe in the 1300's.

Superstition also can affect history. During the late fifties, the Colombiana, a

group of Italian experts on the life of Christopher Columbus, reviewed all the documents related to the explorer's historic arrival in the Americas. They concluded that Columbus actually landed in the New World on October 13, 1492. The man entrusted with Christopher Columbus's log and papers may have deliberately changed the date to October 12 to avoid the evil omen of the number 13.

But 13 has not always been considered evil or unlucky. The ancient Egyptians considered death, the thirteenth stage of earthy life, as the transition to eternal life. For them, death was a transformation, not an ending. Unlike the Last Supper, the thirteenth chair at King Arthur's Round Table was a seat of honor, reserved for the knight who would find the Holy Grail.

The number is also significant in American history. The original 13 original colonies are represented everywhere, from the 13 red and white stripes on the flag to the 13 steps on the pyramid in the Great Seal, which appears on the back of a dollar bill.

Here is a thirteen quiz.

1. In addition to the steps of the pyramid, the number 13 is represented in many ways on a dollar bill, some of them intentional, others are not. How many can you find?

2. What 13-sided polygon occurs in the natural world?
3. What is the most abundant metallic element in the earth's crust?
4. What 13-member group exports petroleum?
5. What is the difference between the Julian and the Gregorian calendars?
6. What heroine was proud of her 13-inch waist?
7. In what fictional tale do 13 dwarfs take a collective journey?
8. Why is it ironic that Friday the thirteenth is considered unlucky?
9. The first permanent English settlement in the New World was established on May 13, 1607. What significant event occurred 13<sup>2</sup> years later? And 13<sup>2</sup> years after that?
10. What novel begins, "It was a bright cold day in April and the clocks were striking thirteen"?
11. What unlucky moon mission exploded in 1970?
12. What is significant about 13<sup>2</sup> and 31<sup>2</sup>?
13. What composer, born in 1813, composed 13 operas and has 13 letters in his name?

Answers to these 13 questions appear somewhere else in this newsletter and yes, you'll have to look for them.

#### PARKS AND WILDLIFE UPDATE

Submitted by Butch Fralia

With the new Parks and Wildlife volunteer act, changes are taking place within the department. There is a proposal in place where volunteers will have \$25,000 accident coverage while working on State Parks in a volunteer capacity. If all goes according to plan, this is will be effective July 2, 1992. This means someone hurt during volunteer activity will have accident coverage. This does include coverage during recreational visits to the park. Other proposals such as liability coverage while working with park visitors are in work. These are proposals until they become effective.

The Gorman Cave gate installation at Colorado Bend State Park is complete. Mike Wharton and crew did an excellent job on the gate. Volunteers who worked on the installation are Bruce, Donna, Meda and Mike Anderson, Butch Fralia, Keith Heuss and Ed

Young. Ed was at the park for a week while the installation took place. Bill Elliot monitored air quality and air flow in the cave during the installation. Bill turned this chore over to Ed Young for a few days while he returned home in Austin. John Williams (TPWD cave liaison) and CBSP superintendent Robert Basse were to meet February 27, 1992 to discuss a public access plan for the cave. Things are moving very rapidly within TPWD to make caves available.

There are currently nine park regions within Parks and Wildlife. An effort is underway to organize a tenth region. CBSP and most parks that have caves are likely to fall into the new region. The proposed director for the region is easy to work with and has maintained positive relations with cavers in the past. This is a bright spot on the horizon for everyone interested in caves and caving on state parks.

PROPOSED PROCEDURE FOR LISTING SIGNIFICANT  
CAVES UNDER THE FEDERAL CAVE RESOURCES  
PROTECTION ACT OF 1988

(This Procedure will not be codified  
in the Code of Federal Regulations)

The following information came from the NSS. The information involves the implementation of Public Law 100-691 of the 100th Congress titled: "Federal Cave Resources Protection Act of 1988." The implementation will be by Bureau of Land Management and National Forest Service. It is here for caver awareness of Federal activity affecting their interest. Further information, i.e., copy of the FCRPA '88, and detailed proposals will be available at the March grotto meeting. Anyone wishing copies can contact Butch Fralia before the meeting.

Most the information presented below, comes from the Forestry Service. The BLM proposal is virtually identical except minor difference based on BLM internal structure. Before beginning the main body of the plan, here are a few definitions from FCRPA '88. It's immediately apparent the act does not define a "significant" cave. It does define cave, cave resource and other speleological terminology. It provides for the protection of caves, penalties, etc. It leaves the definition of "significant" caves, to interested "cavers," "private sector" interest and the appropriate governmental agencies.

FCRPA '88; SEC. 3. Definitions.

(1) Cave. --The term "cave" means any naturally occurring void, cavity, recess or system of interconnected passages which occurs beneath the surface of the earth or within a cliff or ledge (including any cave resource therein, but not including any vug, mine, tunnel, and aqueduct, or other manmade excavation) and which is large enough to permit an individual to enter, whether or not the entrance is naturally formed or manmade. Such term shall include any natural pit, sinkhole, or other feature which is an extension of the entrance.

(5) Cave Resource. --The term "cave resource" includes any material or substance occurring naturally in caves on Federal lands, such as animal life, plant life, paleontological deposits, sediments,

minerals, speleogens and speleothems.

(7) Speleothem. --The term "speleothem" means any natural mineral formation or deposit occurring in a cave or lava tube, including but not limited to any stalactite, stalagmite, helictite, cave flower, flowstone, concretion, drapery, rimstone, or formation of clay or mud.

(8) Speleogen. --The term "speleogen" means relief features on the walls, ceiling, and floor of any cave or lava tube which are part of the surrounding bedrock, including but not limited to anastomoses, scallops, meander niches, petromorphs and rock pendants in solution caves and similar features unique to volcanic caves.

Apparently BLM and NFS acted where the law didn't and made the effort to define a significant cave:

**Significant Cave** means a cave located on National Forest System lands that have been evaluated by the authorized officer and determined to have biotic, cultural, mineralogic, paleontologic, geologic, hydrologic, or other resources that have important value for scientific, educational, or recreational purposes.

**SUMMARY:** This proposed rule would implement the Federal Cave Resources Protection Act of 1988, which requires identification, protection and maintenance, to the extent practical, of significant caves on Department of the Interior and National Forest System lands. The proposed rule would establish criteria to be considered in the identification of significant caves. It would also integrate cave management into existing planning and management process and protect cave resource information to prevent vandalism and disturbance of significant caves.

**DATES:** Comments must be received in writing by April 13, 1992 (BLM) and March 23, 1992 (NFS).

**ADDRESSES:** Comments should be sent to: Director (140), Bureau of Land Management,

Room 5555, Main Interior Building, 1349 C Street, NW., Washington, DC 20240.

Send written comments to F. Dale Robertson, Chief (2350) Forest Service, USDA, P.O. Box 96090, Washington, DC 20090-6090.

#### **INTRODUCTION:**

The Federal Caves Resources Protection Act of 1988 (16 U.S.C 4300-4309), hereafter "the Act", directs the Secretaries of Agriculture and the Interior to prepare and maintain a list of significant caves. The proposed process for listing significant caves involves two separate and distinctly different processes. The first or initial listing will be a special project to collect known cave information quickly on a State-by-State basis and will be an interagency effort in consultation with individuals or organizations interested in and knowledgeable of cave resources. The second or subsequent listing process will utilize the initial listing as a benchmark and will be done as a part of the regular land management planning processes in use by the various Federal agencies.

Both process will involve interested private individuals, organizations, and governmental agencies.

Each of the processes involves three steps: (1) nomination, (2) evaluation, and (3) determination.

The final procedures will be established following consultation with the Secretary of the Interior and analysis of comments received from reviewers.

#### **INITIAL LISTING:**

Section 4(1)(b)(A) of the Act states that "the Secretary shall prepare an initial list of significant caves for lands under his jurisdiction not later than one year after the publication of the final regulations." The following procedure is proposed for use by the USDA Forest Service and agencies of the U.S. Department of the Interior for developing the initial listing of significant caves. The accompanying chart illustrates the proposed process.

**NOMINATION:** A public notice calling for nominations will be made on the national level. Nominations will be accepted for six months. Nominations will be sent to one location within a given state: the addresses

will be listed in the public notice.

Individual cave nominations should provide the following information: Name, address, and telephone number of individual or organization submitting the nomination and/or who can answer question about the nomination; date of submission; cave name; legal description and/or location shown on a topographical map; cave map or extent of known passages; Federal agency responsible for cave's management; discussion of the characteristics of the cave as it relates to the criteria in 36 CFR 290.3(b). Nominations could be submitted by any interested party.

**EVALUATION:** Nominations would be evaluated by interagency teams appointed by the authorized officers, i.e., Regional Forester, State Director, etc. Team membership will include representatives with cave expertise and/or sufficient knowledge of cave resources to evaluate a cave nomination against the criteria in proposed 36 CFR 290.3(b) and corresponding USDI rules.

Organizations or individuals with cave expertise would be consulted in the evaluation.

The team would make recommendations to the authorized officer as to which of the following categories a nomination should be placed: (1) "List of Significant Caves"; (2) "Does Not Meet Cave Definition of the Act"; (3) "Caves Not Listed"; and (4) "Inadequate Information."

Caves listed as significant will be managed under the act, regulations at 36 CFR 290 et seq., and standards and guidelines in forest plans. Caves not listed will be managed under appropriate forest plan cave standards and guidelines. Cave nominations returned for inadequate information will be managed as significant caves for a reasonable amount of time until the data necessary to render a determination can be collected, as determined by the authorized officer. "Caves" that do not meet the definition of the Act will be managed under appropriate forest plan direction.

**DEFERMINATION:** The authorized officer having jurisdiction over the cave resources under consideration will make the final decision based on the recommendations of the review team and other pertinent information.

Caves in the "Inadequate Information" categories would be protected the confidentiality requirements of proposed 36

CFR 290.4. The list of significant caves from the initial listing process would be appended to the appropriate Forest Plan and would be exempt from the requirements of the Freedom of Information Act, pursuant to Section 5 of the Act.

#### DETERMINING SIGNIFICANT CAVES FOLLOWING INITIAL LISTING.

Section 4(b)(1)(B) of the Act directs that "The initial list of significant caves shall be updated periodically, after consultation with appropriate private sector interest, including cavers. The Secretary shall prescribe by policy or regulation the requirement and process by which the initial list will be updated, including management measures to assure that caves which have

been nominated and are under consideration for the list are protected during the period of consideration."

After the initial listing process is completed, future nominations evaluations and determinations would be made as part of the Forest Planning process (36 CFR part 219).

Nominations would be accepted on a continuous basis by the authorized officer. The authorized officer would evaluate and decide upon nominations received on an annual basis and in consultation with appropriate private sector interests, including organizations or individuals with cave expertise. Caves determined to be significant would be added to the list in the Forest Plan appendix and managed accordingly.

### 13 ANSWERS

Note: The number 13 quiz was written by Scot Morris, reprinted from Omni Magazine, October 1991 issue.

1. There are 13 letters in the motto ANNUIT COEPTIS above the pyramid; 13 stars above the eagle's head; 13 strips on its shield; and 13 letters in the motto E PLURIBUS UNUM, on the ribbon in its beak. The eagle also holds 13 war arrows on one side and a peace branch with 13 olives and 13 leaves on the other side. There are 13 beads in the decorative "rattlesnake tail" chains on the outer sides of the Great Seal. And the date, in Roman numerals, 1776, is printed directly opposite 1789, the only other date on every dollar bill-in the green Treasury seal next to Washington's portrait. The difference between the two dates is 13 years.
2. Viewed from the outside the solar system, Earth's moon travels around the sun, tracing a path that resembles a 13-sided polygon with rounded corners.
3. The thirteenth element, aluminum.
4. 13 member nations make up OPEC, the Organization of Petroleum Exporting Countries.

5. The Julian calendar currently lags 13 days behind the Gregorian calendar and will remain so until the year 2100. Then the difference will become 14 days.
6. Scarlett O'Hara in Gone With The Wind.
7. The Hobbit, by J.R.R. Tolkien, 13 dwarfs escort Bilbo Baggins from the Shire to the Lonely Mountains.
8. The thirteenth of the month is more likely to fall on a Friday than on any other day of the week. Our calendar repeats itself, exactly, every 400 years. During each 400-year period, the thirteenth of the month occurs on Friday 688 times.
9.  $1607 + 169 = 1945$ , the year World War II ended, the year the first atomic bomb was dropped, and the year Franklin Delano Roosevelt died, 13 years after he was first elected President of the United States.
10. George Orwell's 1984.
11. Apollo 13.
12.  $13^2 = 169$ ;  $31^2 = 961$ , the reverse of 169.
13. Richard Wagner.



Copyright © 1992, THE MAVERICK GROTTTO.

THE MAVERICK BULL is the monthly newsletter of THE MAVERICK GROTTTO, an internal organization of THE NATIONAL SPELEOLOGICAL SOCIETY (NSS G-322). The editor invites all individuals and other Grottoes to submit articles, news, maps, cartoons, art and photographs. If the material is to be returned, a self-address stamped envelope should accompany it.

REPRINTING ARTICLES: Internal organizations of the NATIONAL SPELEOLOGICAL SOCIETY may reprint any item (unless copyrights belong to the author, as will be stated in the byline) first appearing in THE MAVERICK BULL, if proper credit is given and complete copy of the publication is delivered to the editor of THE MAVERICK BULL at the time of publication. Other organizations should contact the editor at the address herein.

EXCHANGES: THE MAVERICK GROTTTO, will exchange newsletters with other grottoes. Contact the editor.

COMPLEMENTARY NEWSLETTERS: THE MAVERICK GROTTTO will provide complementary newsletters to persons or organizations who provide cave access (i.e. landowners) or otherwise provide assistance to cavers. THE MAVERICK GROTTTO will provide one free issue to persons interested in becoming members.

SUBSCRIPTION RATES: Subscription rates are \$10.00 per year for members and non-members.

MEMBERSHIP POLICY: Any individual with interest, beliefs and actions consistent with the purposes of THE MAVERICK GROTTTO and THE NATIONAL SPELEOLOGICAL SOCIETY is eligible for membership. Acceptance of new members is based on payment of dues and a mandatory three trip requirement with at least three different grotto members. These three members shall act as sponsors. At least one sponsor must attend the meeting at which the membership vote is taken. A two-thirds majority vote of the members present will be required for acceptance.

MEETINGS: Meetings are held the second Tuesday of each month at Smokey's Ribs, 5300 E. Lancaster, Fort Worth. It is a little

less than one mile west of Loop 820 and next door to K-Mart. The time is 7:00 P.M. and the food is good.

CARBIDE: Grotto carbide is available at the meeting on even numbered months. The carbide is free to all members and is sold to others at the price of fifty-cents per pound. Anyone needing carbide at other times should contact Bruce Anderson (817/246-0313) to arrange for pickup.

LIBRARY: Support your Grotto Library. Russell Hill will be accepting books, magazines articles on cave related topics, copies of homemade cave videos, etc. for our library. We wish to thank Russell for his efforts each month to bring and set up the Grotto Library.

CHAIRMAN: Butch Fralia  
3412 Walton Ave.  
Fort Worth, Tx, 76133  
(817)346-2039

VICE-CHAIRMAN: Ed Young  
3030 Oak Ridge Place  
Grand Prairie, Tx, 75051  
(214)262-8188

SECRETARY/EDITOR: Dale Ellison  
1208 Dan Gould Rd.  
Arlington, Tx, 76017  
(817)473-0463

TREASURER: Jimmy Thomas  
3705 Bluebonnet Circle  
Weatherford, Tx, 76087  
(817)599-8278

CAVE RESCUE: CALL COLLECT (512)686-0234



# CAVER BOB

After crossing the border, Bob WAS commandeered by a horde of dwarf bandidos.

1

