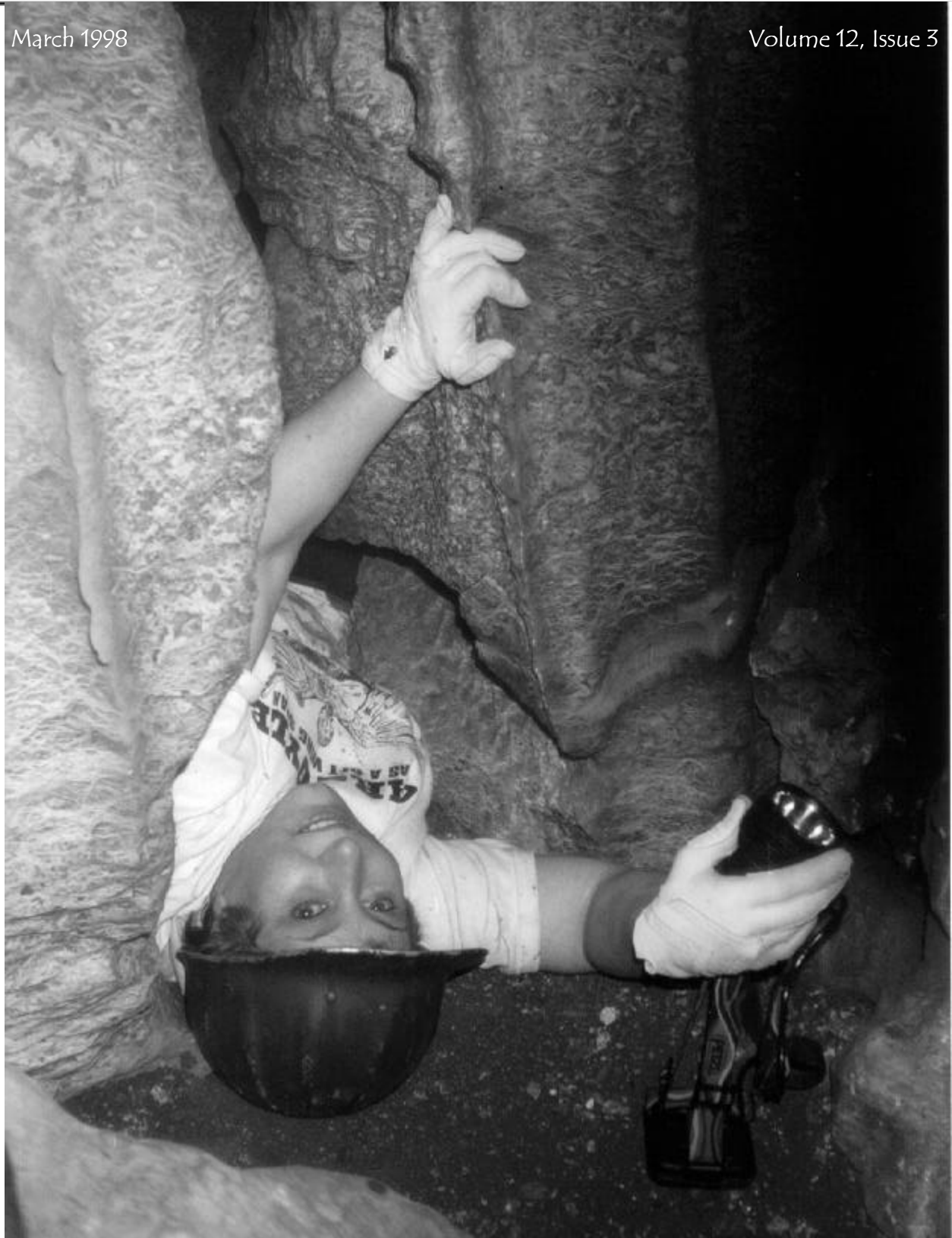


# THE MAVERICK BULL

The Monthly Newsletter Of The Ft. Worth Maverick Grotto

March 1998

Volume 12, Issue 3



Copyright 1998. The Maverick Grotto.

**The Maverick Bull** is the monthly newsletter of The Maverick Grotto, an internal organization of The National Speleological Society (NSS G-322). The editor invites all individuals and other grottos to submit articles, news, maps, cartoons, art and photographs. If the material is to be returned, a self-addressed stamped envelope should accompany it.

**Reprinting Articles:** Internal organizations of The National Speleological Society may reprint any item (unless copyrights belong to the author as stated in the byline) first appearing in *The Maverick Bull* if proper credit is given and a complete copy of the publication is delivered to the editor at the time of publication. Other organizations should contact the editor of *The Maverick Bull* at the address herein.

**Exchanges:** The Maverick Grotto will exchange newsletters with other grottos. Contact the editor.

**Complementary Newsletters:** The Maverick Grotto will provide complementary newsletters to persons or organizations that provide cave access (i.e. landowners) or otherwise provide assistance to cavers. The

Maverick Grotto will provide one free issue to persons interested in becoming members.

**Subscription Rates:** Subscription rates are \$15.00 per year for non-members and free for members.

**Membership Policy:** Any individual with interests, beliefs and actions consistent with the purposes of The Maverick Grotto and The National Speleological Society is eligible for membership. Acceptance of new members is based on payment of dues and a mandatory three trip requirement with at least three different grotto members. These three members shall act as sponsors. At least one sponsor must attend the meeting at which the membership vote is taken. A two-thirds majority vote of the members present will be required for acceptance.

**Meetings:** Meetings are held the second Tuesday of each month at Smokey's Ribs, 5300 E. Lancaster, Fort Worth. It is located less than one mile west of Loop 820 and next to K-Mart. The time is 7:00 p.m., and the food is good.

**Carbide:** Grotto carbide is available at the meeting if prior arrangements are made. Carbide is free for the asking. Contact Russell Hill at 220-

7108 or Butch Fralia at 346-2039 for more information.

**Library:** Support your Grotto Library. Russell Hill will be accepting books and magazines on cave-related topics, copies of homemade cave videos, etc. for our library. We wish to thank Russell for his efforts each month to bring and set up the Grotto Library.

**Chairman:**

John Langevin  
4700 Trail Lake Dr.  
Fort Worth, TX. 76302  
(817) 924-1919

**Vice-Chairman:**

Dave Milhollin  
101 Hosack St. #3  
Arlington TX 76010  
(817) 459-3959

**Secretary/Editor:**

Chad Fenner  
3700 Wayland  
Ft. Worth, TX. 76133  
(817) 292-7722

**Treasurer:**

Sharon Mastbrook  
3412 Walton Ave.  
Fort Worth, TX 76133  
(817) 346-2039

**Cave Rescue:** Call collect: (512) 686-0234

## Photo Credits

This month's cover photo is of Karen Perry coming through a tight crawlway in Green Gypsum Cave.  
Page 4 (bottom left) Looking out the entrance of Graffiti Cave, by Karen Perry  
Page 4 (top right) Dave Milhollin in Green Gypsum Cave by Karen Perry (*Ed's note: This picture is gorgeous in color. There are a lot of greens all over the wall. Hopefully, by the time you read this I'll have it in the grotto archives.*)  
Page 5 David Turner, of Austin, preparing to rappel into Chimneyer's Delight, by Ed Goff  
Page 6 Sketch page from Ed Goff's Chimneyer's Delight map.

## Other Credits

Editor: Chad Fenner

Editor-in-charge-of-English: Lisa Fenner

## Visit Our Web Site

The *Maverick Bull* is available as a World Wide Web site at:  
<http://www.fwst.net/np/maverickgrotto>  
Web space donated by Star-Telegram Online Services.



## Minutes for the February Meeting

**Maverick Grotto Feb 10, 1998**

The February meeting began at approximately 7 p.m. The business portion of the meeting was called to order shortly after 7:30 by Grotto Chairman John Langevin.

**Visitors**

None.

**Announcements**

TSS Photography Workshop at Cave Without a Name, March 28

\$10.

D/FW-Maverick Rites of Spring, April 18.

TSA Convention, April 24-26.

D/FW adopt-a-highway cleanup date Feb 21.

**Officers' Reports**

\$438.30 in Treasury.

**Old Business**

None.

**New Business**

None

**Trip Reports**

Eight people went to Carlsbad Caverns for the restoration trip.

The meeting closed and was followed by this month's program, which was by Butch Fraila on Computers in Caving.

## Editor's Ramblings

Happy March.

Getting ready for the Hills (Three Mile and McKittrick). If you want to go and haven't called yet, do so now. I'm going to be finalizing the plans soon.

Last call for dues. If you ain't paid,

this is you last newsletter. Next month, I'm publishing a new grotto directory, so if you want to be on the inside, get yourself up to date.

Two trip reports with pictures. Actually, I got a third at the last minute, but wanted to wait for some

accompanying pictures. Some of the pictures were from the new ol' timer, Karen Perry. I love it when someone just jumps right in with both feet and a camera.

Good Caving.

CF

## March Meeting

This month's meeting will be held on Tuesday, March 10 at Smokey's Ribs, 5300 E. Lancaster, at 7 p.m. This month's program will be presented by Bill Tucker of Tucker's Dive Shop. The program will concentrate on the unique desert spring at Phantom Springs Cave, at the base of the Davis Mountains. There are endangered pupfish living

in the water, as well as six new species of troglobites we have found. Deer, javelina, racoons, porcupines, turkey and many other birds water there. There is noticeable evidence of Native American settlement there, and Spanish explorers are thought to have been there in the 1500's. The source of the major component of the water flow is yet undetermined, but is

believed to be from far to the northwest.

I'm sure Bill will have lots of great pictures to go along with this.

Come join us for this great program and cave talk.

## Rites of Fall

Rumor has it that the annual D/FW - Maverick grotto Rites of Fall party will be April 18 at the same location that the last few parties have been at. Keep that date open, just in case.

## Stiver Ranch

By Wayne Peplinski

Cave: Arch Cave, Green Gypsum Caver, Graffiti Cave

Date: Jan 29, 1998

Cavers: R.D. Milhollin, Wayne Peplinski, Karen Perry

Our trip started at about 6 p.m. Friday, Jan. 29, 1998. The trip included pizza and deer! We missed one (a deer) doing 70 mph by mere inches and did some off-road driving in Ed's new RAV4; good driving, Ed! After passing our turn-off by a few miles, we backtraced and found the road. You miss some beautiful country coming in at night!

We set up camp and managed to sleep a few hours before the rain hit. It wasn't bad though, cleared out by morning, and the weather was great the rest of the weekend. After Dave's famous cave coffee, we headed to Bill Stiver's Ranch House for a brief TSA meeting.

Bill is a great host. If more land owners were like Bill, cavers would be in Heaven!

From here, we headed out to do some caving! We got a loan of some survey equipment and directions to Arch Cave. We began a long but



thorough survey; Ed's sketch is very well done. I'm sure this will be a nice map.

Although Arch Cave is somewhat small, it has a lot of interesting gypsum features: a sloping entrance in a small sink with a breakdown floor is the main chamber making a "Y" inside, a lot of various kinds of bones — goat, deer, porcupine, and a javalina skull. Javalina are no longer in the area.

We managed to find a small,

undiscovered "tube" close to the entrance. The cave is capable of holding a couple of people once inside. In area of the cave, someone cut out "gypsum bookends," so we noted it on our map. We took a last count of the bats (about 15 in this one) and finished the survey, leaving an area as a possible lead with some rock removal.

We then headed back to camp for fajitas. Yum!

Talking to Bill Stiver around the campfire that night, he told us that he has found about 20 caves with many possible digs! In another sink was an Indian burial site and also where flint was mined and knapped.

On Sunday, we managed to rise a little earlier to do some investigating in other sinks. Green Gyp Cave was fun! It is a walk-in cave, sloping down to a small crawl of about 25 to 30 feet through the gypsum. Some of it is pretty sharp.

From there, you end up in another room with a ceiling of about 25 feet in one area. Lots of breakdown here.

We poked around in a few others, but I'm not sure of all of the names. The Stiver Ranch has more to see, and I already feel the urge to go again!



# Vertical at Last, Vertical at Last, Thank Gawd Almighty, Etcetera

By Laura Davis Goff

Cave: Chimneyer's Delight  
Colorado Bend, January 1998  
Cavers: Laura Davis Goff, Ed Goff,  
Walter Pickett, David Turner

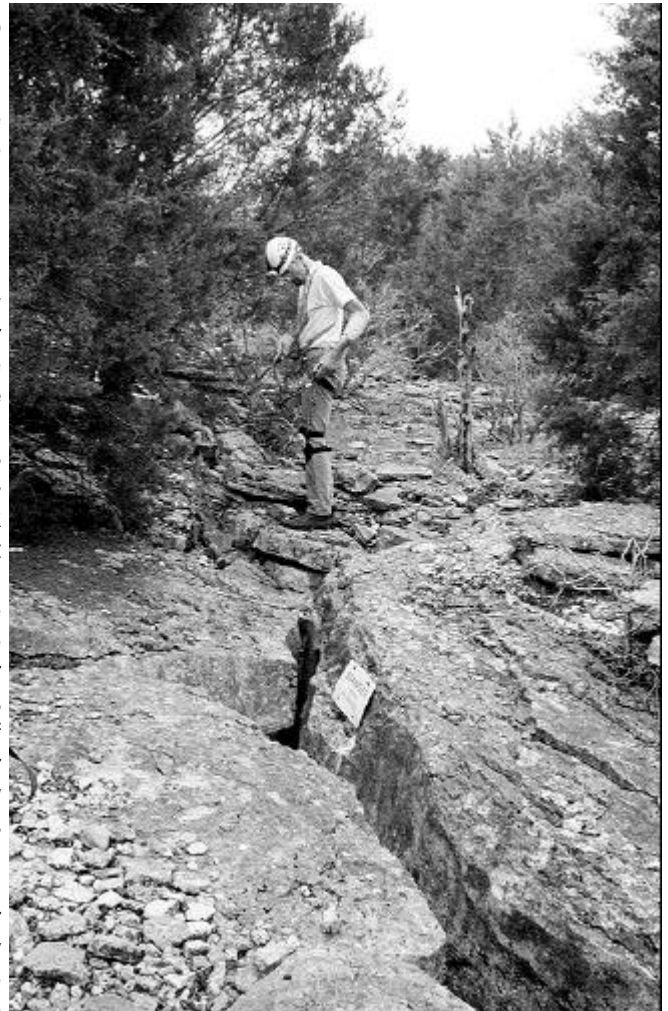
I went to Colorado Bend intending just to hang out on top, read, relax, and listen to muffled voices floating up from underground. Somehow, though, I was convinced to go caving. Actually, I was feeling a slight twinge of jealousy, so it wasn't hard to twist my arm. Knowing I might feel this way, I had brought my gear along. Ed used his GPS (with freshly downloaded coordinates, compliments of Butch) to locate Chimneyer's Delight. We got within a hundred feet or so, found the crack system, then scouted around for the tell-tale tree tag marking the entrance. Ed spotted the tag, and Walter busily set about rigging the rope, rescue-fanatic-style, while the rest of us struggled into our harnesses. (Those things are so flattering to the figure!)

The entrance is a long crack in the ground, from just a few inches up to three feet across. Walter rappelled first. I followed next, then Ed and David. The drop, about 35 feet, is so narrow that you can't turn your head much or see down to what's coming next. I spotted a hibernating bat on the wall a few inches from my face. After the first ledge, there is a second pit about 15 feet deep. One wall of this drop was running with water, the other side dry. Besides being wet, the cave was as cold as it was on the surface (in the 40s). We looked around a bit to get our bearings. I found a gray, fuzzy carcass guarding one passageway, and there were plenty of crickets and even a few spiders.

Our orders were to resurvey the cave and add vertical profiles and cross-sections to the old data on file. The others continued this task while I looked around some more and tried to stay warm. I followed their slow progress, looking over Ed's shoulder while he sketched. The flowstone at the bottom of the second drop was interesting. It was off-white with black crackles throughout. It was pretty and reminded me of a piece of antique furniture. We discovered another notable feature of this cave after a couple of hours of surveying our way down one narrow tunnel. The floor begins as rock and dirt, turns into gravel, and then gives way to a floor composed completely of little, dry, rimstone dams. It got prettier the farther we went. We hadn't gotten far into the rimstone area when we decided to call it a day.

After we marked the last station and crawled back to the pit, David quickly frogged out. Walter also ascended the bottom drop and then waited for Ed and me. Ed thought it would be easier for him to chimney this portion and, silly me, I thought I'd try it too. It was almost beyond my strength. Good thing Ed and I are married, because, after I accidentally kicked him in the head, I think he might have killed me if we weren't. With his help from below and Walter's from above, I made it up. Then came the daunting task of ascending the first drop. Remember how narrow I told you that crack was?

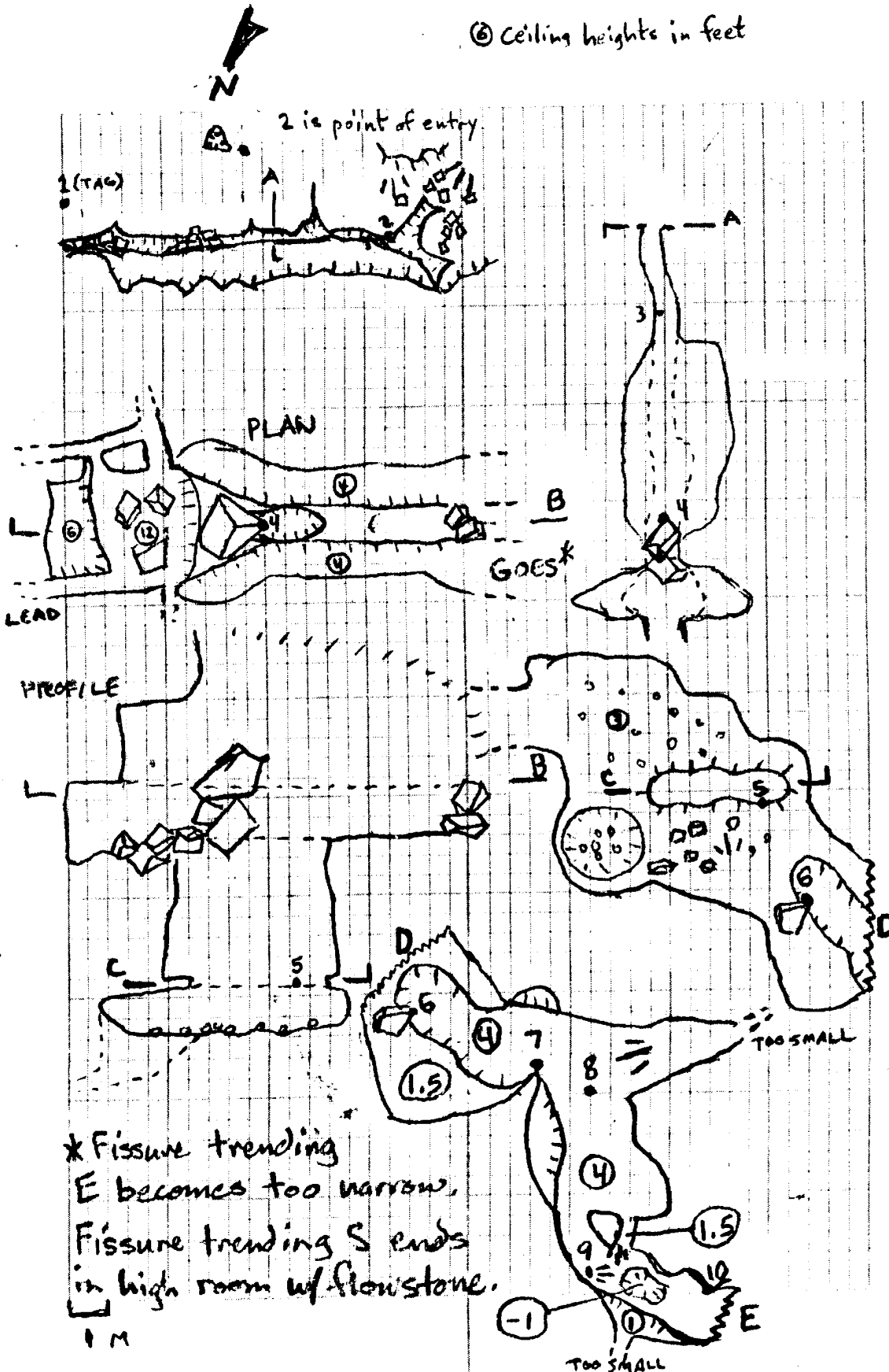
I was outfitted with a hand-me-down harness and imperfectly



adjusted ascending gear. I struggled and panicked at times. At one point I thought I was wedged in forever and they'd have to lower down sandwiches and coffee until I died, but Ed and Walter encouraged and directed from below until I was a few feet from the top. I was fighting the lip, which I'd been told is always the hardest part, when David offered me a hand, literally. I grabbed it, promptly lost both footholds, and dangled, fearing dislocation of my shoulder. He let me go and I struggled some more. This seemed to go on for hours, although it was only a few minutes. Finally I turned my head and right behind me was the perfect little ledge on which I stepped up and was free of the cave.

It was difficult, but satisfying. After all, things that come too easily aren't

© Ceiling heights in feet



always worth much. It certainly wasn't quite the same experience as climbing a rope hanging from a tree. I am glad that I've finally been initiated, and this tight chimney was probably among the more difficult scenarios in which I might find myself. So I won't hesitate to try more vertical trips in the future for lack of any real experience. If anyone reading this hasn't tried it yet, I recommend jumping into this vertical caving thing. You shouldn't let a silly little pit keep you from exploring a beautiful cave.

## 1998 TSA Spring Convention Update

Don't forget that the Convention is right around the corner. It will be April 24-26 at the Community Center in Blanco. Check out the February TSA Activities Newsletter for details.

There are still openings for presentations on Saturday. Talks should be limited to twenty minutes, but special arrangements can be made with me for longer feature presentations. Talks can be accompanied by slides; a projector will be available.

As yet, we have no submissions of cave

maps, slides, or photos for the appropriate salons. This is a great way to show off your work and win prizes! If there are no submissions, there will be no salons, no prizes, and the quality of the Convention will be greatly reduced. Send all submissions to me now! Submissions will probably not be accepted during Convention, since we have to plan for judges and prizes in advance. My address is 3017-B Burleson Road, Austin, TX 78741-7218. If you are sending a big package or tube, it is best to ship it to my work address: Bat Conservation International, 500 Capital of Texas Highway, Austin, TX 78746.

Here are the guidelines for the Map Salon: just extrapolate for the Photo Salon and Slide Salon. (Thanks to Brent Aulenbach, chairman of the SERA Map Salon this year.)

1) Anyone can enter. The map must be of a cave from Texas or drafted by a Texas caver. A map that previously won an award at a TSA map salon is ineligible unless there has been a significant addition to the map.

2) Maps will be judged in categories which will be determined at the salon based on the number of entries. There must be a minimum of 3 entries in order to make a category. Maps can only be in one category except for Cartographer 0-2 years experience which will be judged separately in addition to its other category. Possible categories include:

- Horizontal to 50' long
- Horizontal 50' - 500' long
- Horizontal > 500' long
- Vertical to 50' deep
- Vertical >50' deep
- Multidrop
- Electronically drafted
- Cartographer 0-2 years experience

3) Awards will be given based on the following criteria: Honorable mention for all maps which reach a certain level of proficiency based on points. First place for each category

will be awarded for most number of points in that category. Best of show will be determined by the judges. This will not be determined solely upon point totals.

4) There will be three judges from across Texas, if possible.

5) The salon is judged similarly to the NSS Convention Salon. In the past, there have been several excellent maps which were missing one or more of the essential elements which prevented them from doing well in the salon. Therefore, I have included general guidelines that will be used in the judging for people to check their maps beforehand. Essential elements (10 points each if on map)

- Cave Name
- Obvious entrance or connection (labeled)
- North Arrow (Note magnetic or true)
- Bar Scale
- Date
- Survey Methods
- Cartographer or Survey Group
- Techniques (0 to 5 points each)
- Drafting (technical quality)
- Lettering
- Detail Thoroughness
- Vertical Control Quality
- Site Details (surface, geology, etc.)
- Legend or Symbols
- Perks (0 to 2 points each)
- Balance and Layout
- Visual Impact
- Complex Representations
- Innovations

So, get your maps finished up, and see you there! If you have any questions, please contact me.

Convention reminder: Don't forget your wallets! There will be several vendors at Convention, so this will be a great opportunity to replace old caving equipment, upgrade to better gear, and stock up on caving publications. I know that the TSS is reprinting the Field Guide to the Caves of Kendall County and the Field Guide to the caves of Blanco, Gillespie, and Llano Counties, which

will be available that weekend. They are also running a one-weekend-only special for cavers on The Caves and Karst of Texas, the highly acclaimed guidebook from the 1994 NSS Convention. That weekend only it will be only \$15 (that's right, only \$15!). Get a few copies for Christmas presents and get yourself a second copy to stay on your shelf, while your first one goes in the field with you.

News flash: There will be a TSA meeting at 6 p.m. on Saturday, well before the 7 p.m. banquet. There will be a TSA Rescue Committee meeting (and workshop?) Sunday morning at 9 a.m.

Presenters, vendors, workshop coordinators, persons interested in judging salons, and groups wishing to schedule meetings should contact the Convention Chair, (Jim Kennedy) at [jkennedy@batcon.org](mailto:jkennedy@batcon.org), or phone at home at 512-443-8198 or work at 512-327-9721.

See you there!

— Jim "Crash" Kennedy

## Frank Reid Memorial Page

A memorial page has been set up in honor of Frank Reid, who died in January of a heart attack.

[http://www.wingedseed.com/samara/rstitt/frank\\_reid.htm](http://www.wingedseed.com/samara/rstitt/frank_reid.htm)

## The TSS Cave Photography Workshop,

Cave Without A Name, Texas  
March 28, 1998

This year's TSS workshop will be on cave photography. The purpose is to provide a wide range of information to useful to beginners trying to figure out the basics and to advanced photographers curious

about more special-interest topics.

The photo workshop will be held inside Cave Without A Name, a small show-cave located near the town of Boerne, just north of San Antonio. Bring a lawn chair if you do not wish to sit on the cave floor. The registration fee for the weekend will be \$10. This includes the \$5 fee for visiting the cave on Saturday.

You should bring along ALL your camera gear: cameras, flashes, tripods, cases, film. Also bring any questions you would like answered. If you are just beginning and only have a basic point and shoot, or do not have a camera, you should still find enough information to help you get started with your photographic endeavors.

We will begin around 8:30 a.m. with registration. The talks will start at 9 a.m. The cave will be running tours as normal, and during the talks we will be where they should not interfere with us or us with the tours. The early time is to allow enough time in the evening to practice what was learned in the morning sessions. Instructors will take small groups through the cave to practice techniques. Most of the trips will be on trail, except for those wanting to work on wet-caving methods in the stream passage (bring a wetsuit).

If you wish to enter the cave on Sunday, it will cost you another \$5 and will be for on-trail tours only. Primitive camping will be on site. And participants can show up on Friday night, March 27. Due to the shortness of time between the morning and afternoon sessions, a lunch is included in the registration fee. Dinner will be up to each participant's whims. The nearest restaurants and stores are about 15 minutes away in Boerne. Slides will be shown in the evening as people like. You are encouraged to bring ~20(+) slides/prints of your own photos for show and tell (to look at). The TSS business meeting will be held on Sunday morning, for those

who wish to attend.

To pre-register, send a check made out to "TSS" for \$10 per person to: TSS Photo Workshop c/o Terry Holsinger, 1007 A Milford Way, Austin Texas, 78745. The workshop will be limited to the first 30 registrants.

Here is a tentative class schedule, (order subject to reorganization):

Allan Cobb: Entrance (natural light) and single flash photos.

Peter Sprouse: Multiple-flash photos (with and without tripods).

Keith Heuss: Exposure, Artificial Light and Digital Cameras.

George Veni: Photographic cave documentation.

Pete Lindsley: Different types of cave gear, packing thereof, 35mm up to 4x5.

Terry Raines : Photography for publications -- what is needed for good results in print.

Val Hildreth-Werker & Jim Werker: Photomonitoring -- photography for cave restoration and management.

Bill Tucker: Underwater/extreme-wetness cave photography.

Discussion for miscellaneous questions not addressed above. (ALL) ~12:00 until ...?: Lunch, then breakup into photo teams to practice techniques in the cave.

Directions:

From the San Antonio area, you head out I-10 to Boerne, taking the first exit (Highway 87). At the fourth traffic light, in town, turn right on 474. Go out of town for 6 miles, turning right on Kreutzberg Road. Follow the faded signs to the cave for 5.3 miles. If you are coming from the northeast you can take Highway 46 (from I35 or US281) over to Boerne, turn right on Main Street, then right again when you reach 474. If coming from the northwest, take I10 to the first Boerne exit, and follow the road until you reach 474 and make a left turn.

For more information on the Texas Speleological Survey, visit our web site at:

<http://www.utexas.edu/depts/tnhc/www/tss/index.html>

## New COMPASS Survey Software Release

I would like to announce a new release of the cave survey software package COMPASS. There are several major new features and lots of minor improvements.

1. Cave Database. COMPASS now has its own database program called CaveBase. CaveBase allows you to create your own databases of cave features. For example, you can keep track of the minerals, water, life forms, leads, chemistry, temperature, wind direction, rock type, stratigraphy, passage size, formation types, PH, etc.

Once you have created a database of cave features, CaveBase has its own specialized query builder that allows you select specific sets of data using sophisticated SQL query commands. The results of your queries can be immediately viewed as colored symbols in the Viewer. If the features in your database have numerical values associated with them, the symbol's size can be used to reflect the magnitude of the value. You can also ask complicated questions about how different data items relate to each other. For example, you could look for combinations of items like life forms near water.

CaveBase can access any standard Windows database data including DBase, Paradox, FoxPro, InterBase, MS Access, and through ODBC many others. It can also create new databases without the necessity of purchasing a commercial database package. You can even incorporate photographs and drawings into the database to create a visual record of the features in a cave.

2. Blunder Location. COMPASS



now has a new feature that makes it easy to locate mis-tied station. The feature works by breaking a loop at each station. The untied end is then checked against every station in the cave, looking for a better connection. The program keeps a list of the best tie-ins. Just testing the new feature, I found a dozen obvious bad tie-ins in the Lechuguilla data set.

Using the new feature, obvious blunders jump out at you.

3. Viewer. The Viewer now has the ability to tilt the Color By Depth and Depth Exclusion options. This makes it possible to color or clip specific levels in a cave that has been tilted. The tilt can be set by specifying the azimuth and inclination of the tilt. It can also be set visually by dragging the arms of a three-dimensional "compass" into the proper position. The program even has the capability of analyzing the cave and finding the average dip and angle of the passages.

4. Cave Editor. By popular demand, I have changed the survey selection process so a single click on the survey list selects the survey and a double click edits the survey. Also, the survey list now shows the date and can be sorted by date order as well as survey and alphabetical order.

5. The Viewer also has many other enhancements. For example, there are improvements to the color-by-depth and color-by-date options which allow the thickness of each band to be set without setting the top or bottom. Also, you can add your own programs and 'tools' to the Viewer menu bar. One of the most import improvements is that the Viewer is now a DDE server. This means that It can accept data from external programs and incorporate them into the survey data. This means that programs like data bases, spread sheets and word processor can now deliver data to the Viewer. Finally, the Viewer can now save the plot data to a new plot

file. This allows you to save the query information that you have sent to the Viewer.

6. There are also many other bug fixes including several Windows 95 related problems which caused wierd displays behavior like large lines appear, large text appears, and part of the image is lost.

7. Also, please note, there is a new COMPASS web page address.

#### HOW TO GET COMPASS

COMPASS is a shareware product. You can try it out free. If you like it and want to use it, you must register. If you don't like it, then don't use it and pay nothing.

The registration cost is \$25.00 for the DOS version and \$25 for the Windows version. Combined registration is \$38. Registration for the data base program is \$15 for previously registered individual COMPASS users. For new registrations the database program is \$20 for private individuals. For institutions, business, and government agencies, the database registration is \$50. Special group rates, and support programs are available.

COMPASS is available free of charge for evaluation purposes. Copies are available through the COMPASS World Wide Web page at:  
<http://members.iex.net/~lfish/compass.html>

The Web Page also has full color screen images of some of the most important features. It also has connections to other cave related WWW pages including links to the USGS DEM files. The whole COMPASS package has hundreds of features and a full discription of the software is beyond the scope of this document. However, the COMPASS Web Page also has a complete and detailed description of all the features and options.

You can also get an evaluation copy of the software directly from me for \$10 to cover materials and

handling. If you are a registered user you can get an updated version directly from me for only \$5. My mailing address is:

Larry Fish  
 123 E. Arkansas  
 Denver CO 80210

Please specify DOS and/or Windows and disk size. If you like the software, please register. You will receive notification of updates and other special offers.

#### MORE INFORMATION

If you don't have access to the World Wide Web, send an e-mail request to: [lfish@nyx.net](mailto:lfish@nyx.net) and I will send you an information packet.

## Walls Now Available via WWW

Walls, the popular cave survey data management software is now available via the World Wide Web. This freeware can be downloaded from:

[www.realtime.net/~davidmck/wallsbeta](http://www.realtime.net/~davidmck/wallsbeta)

Walls has most of the same features that Comapss has, with a different user interface.

## Last Issue

If your label says "**Last Issue - Please Pay Dues**", then this is your last issue unless you get your dues in.

Don't get left behind!

Maverick Grotto  
C/O Chad Fenner  
3700 Wayland  
Ft Worth TX. 76133

## Calendar of Events

March 14-15, 1998, Colorado Bend State Park. Contact Terry Holsinger (512) 443-4241 or Butch Fralia 346-2039  
March 20-22, 1998, Three Mile/Mckittick Hill. Contact Chad Fenner, (817) 292-7722  
March 28, TSS Cave Photography Workshop, Cave Without A Name. Contact Terry Holsinger (512) 443-4241  
TSS Business Meeting, Cave Without A Name. Contact Terry Holsinger (512) 443-4241  
April 11-12, 1998, Colorado Bend State Park. Contact Terry Holsinger (512) 443-4241 or Butch Fralia 346-2039  
April 24-26, TSA Convention, Blanco Tx. Contact Jim "Crash" Kennedy (512) 443-8198  
May 9-10, 1998, Colorado Bend State Park. Contact Terry Holsinger (512) 443-4241 or Butch Fralia 346-2039  
August 3-7, 1998, NSS Convention, Sewanee, Tennessee. Contact William Shrewsbury, (423) 886-3296  
July 12-16, 1999, NSS Convention, Twin Falls, Idaho. Contact David W. Kesner, (208) 939-0979